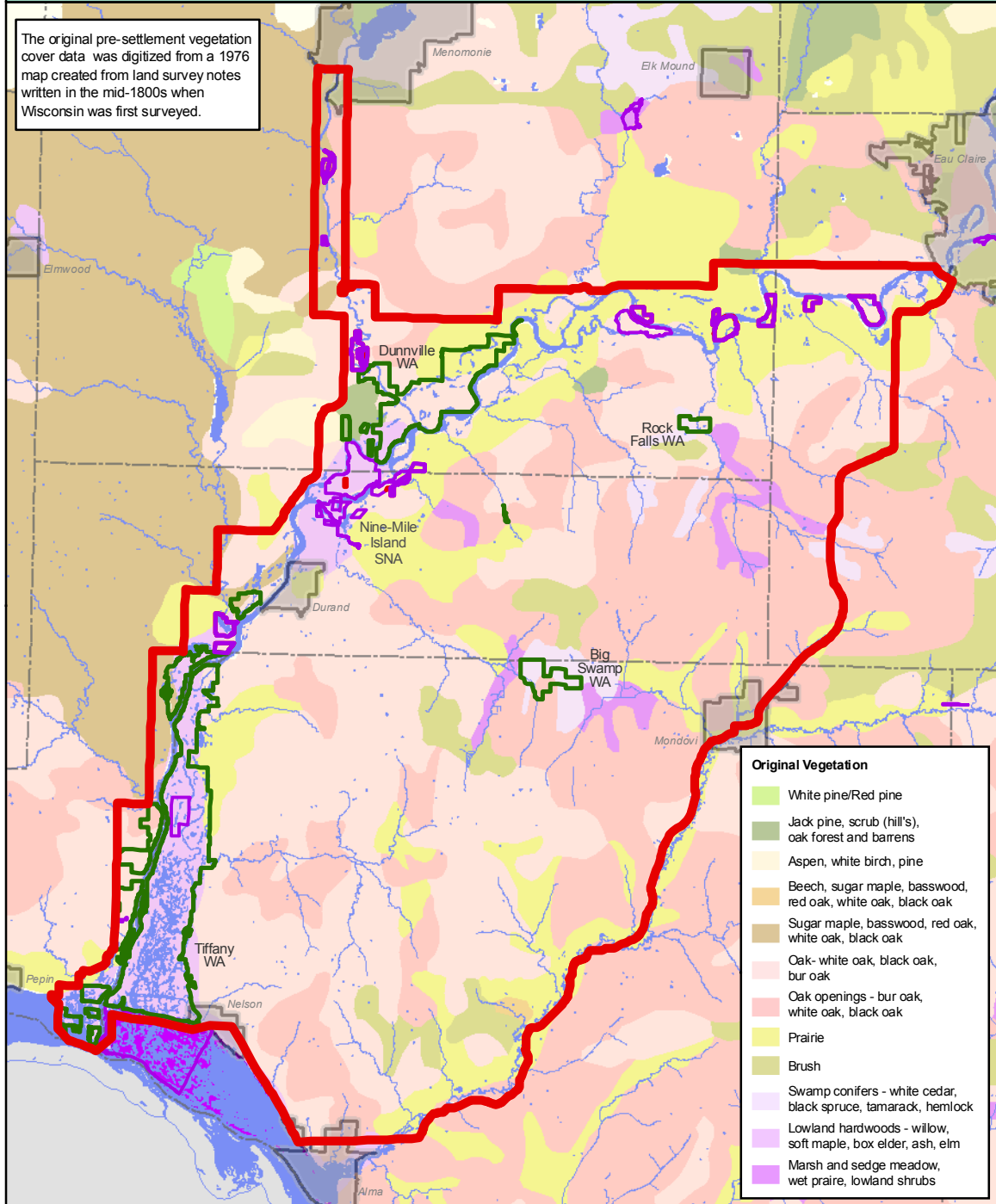


State Wildlife and Natural Areas of the Lower Chippewa River

Original Pre-Settlement Vegetation

Map C

The original pre-settlement vegetation cover data was digitized from a 1976 map created from land survey notes written in the mid-1800s when Wisconsin was first surveyed.



- Original Vegetation**
- White pine/Red pine
 - Jack pine, scrub (hill's), oak forest and barrens
 - Aspen, white birch, pine
 - Beech, sugar maple, basswood, red oak, white oak, black oak
 - Sugar maple, basswood, red oak, white oak, black oak
 - Oak- white oak, black oak, bur oak
 - Oak openings - bur oak, white oak, black oak
 - Prairie
 - Brush
 - Swamp conifers - white cedar, black spruce, tamarack, hemlock
 - Lowland hardwoods - willow, soft maple, box elder, ash, elm
 - Marsh and sedge meadow, wet prairie, lowland shrubs

Project Boundaries

- Wildlife Area
- Lower Chippewa River State Natural Area
- State Natural Area
- City/Village



WISCONSIN DEPARTMENT OF NATURAL RESOURCES



Bureau of Facilities and Lands
NA-LCRSNA-MP-C acr
Map Updated: October 2009

MAP C